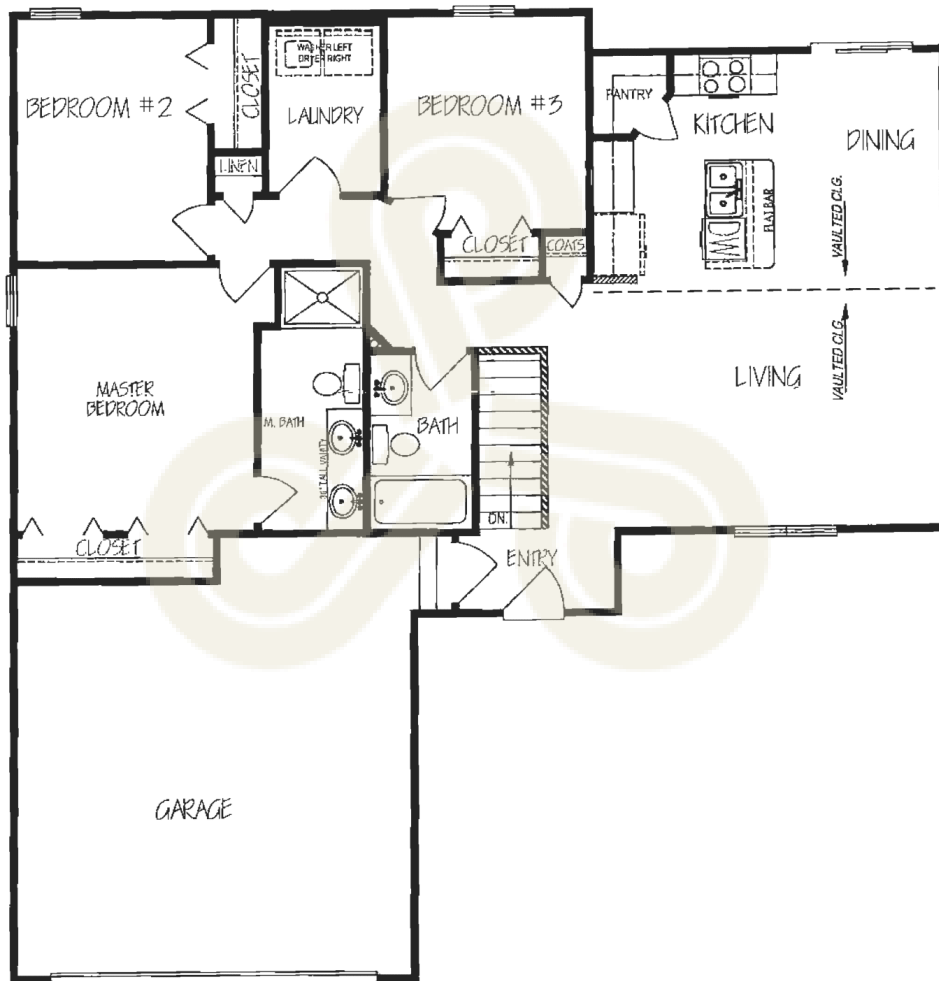


# Don Klausmeyer Construction, LLC

## Tristen— Plan #1219



Builder's floor plans may be drawn to show popular exterior design and interior floor-plan options that are not included in the standard home design and pricing. Please consult with the Preferred Properties' agent in each community with any questions about what optional features are shown and the cost.

Not all floor plans are available in all areas. Verify plan availability with the community manager. Prices and availability are subject to change without notice. Information deemed to be accurate but not guaranteed. All room sizes and square footage are approximate. Elevations are artist's conception and are subject to change without notice. If necessary, Builder reserves the right to substitute material of like quality.

**Marketed exclusively by Preferred Properties of Kansas, Inc.**